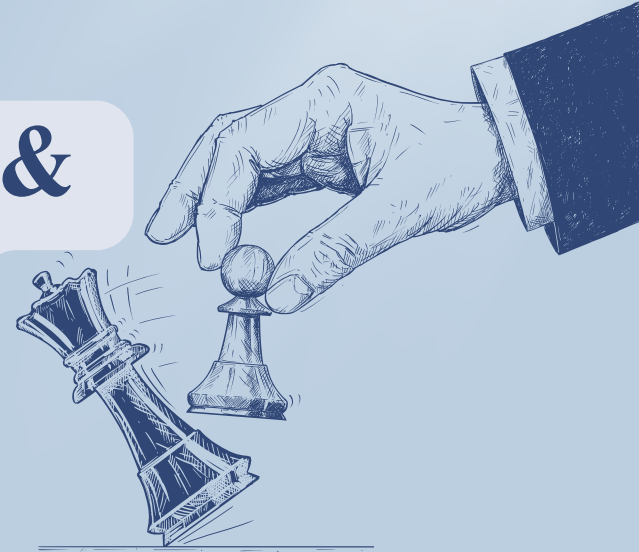




**CHESSENSEI**

**Inventure Academy**  
New World. New Learning.  
YESHWANTHPUR CAMPUS

# 2ND CHESSENSEI OPEN & AGE CATEGORY CHESS TOURNAMENT



**EVENTCODE : KSCA/G107/2526 | BUDCA/G056/2526**

## ENTRY FEE

₹ 650 [FOR AGE CATEGORY]  
₹ 750 [FOR OPEN CATEGORY]

**EARLY BIRD OFFER (REGISTRATION ON OR BEFORE 9TH OCTOBER)**

₹ 550 [FOR AGE CATEGORY]  
₹ 650 [FOR OPEN CATEGORY]



**46 Trophies**

8:30 Reporting Time,  
9:00 Players Meet,  
9:30 Round Starts

**CHIEF ARBITER**  
Mr. Saleem Beig

Chessevents.in

Circle chess



SCAN TO REGISTER

**SUNDAY**

**9TH NOV 2025**

LAST DATE OF REGISTRATION  
31ST OCTOBER 25

**INVENTURE ACADEMY  
YASHWANTHPUR**






PRESTIGE JINDAL CITY, TUMKUR RD,  
ANCHEPALYA, BENGALURU-560073

[WWW.CHESSSEVENTS.IN](http://WWW.CHESSSEVENTS.IN)






# PRIZE STRUCTURE

FOR EACH CATEGORY 10 TROPHIES(5 FOR BOYS & 5 FOR GIRLS)






## UNDER 7 BOYS & GIRLS

1st Prize	Trophy 
2nd Prize	Trophy 
3rd Prize	Trophy 
4th Prize	Trophy 
5th Prize	Trophy 






## UNDER 9 BOYS & GIRLS

1st Prize	Trophy 
2nd Prize	Trophy 
3rd Prize	Trophy 
4th Prize	Trophy 
5th Prize	Trophy 

## UNDER 12 BOYS & GIRLS

1st Prize	Trophy 
2nd Prize	Trophy 
3rd Prize	Trophy 
4th Prize	Trophy 
5th Prize	Trophy 

## UNDER 16 BOYS & GIRLS

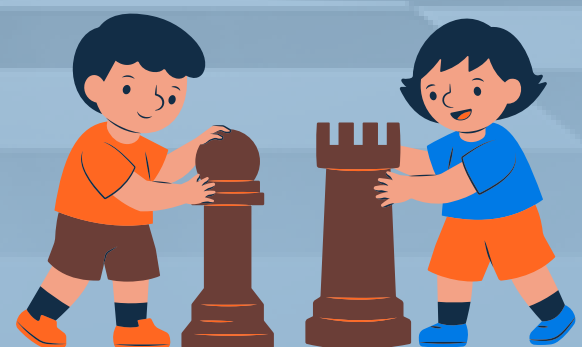
1st Prize	Trophy 
2nd Prize	Trophy 
3rd Prize	Trophy 
4th Prize	Trophy 
5th Prize	Trophy 



Youngest Boy: Trophy  
Youngest Girl: Trophy



Best participating  
School Trophy



# PRIZE STRUCTURE

## OPEN CATEGORY

1st Prize	₹ 5000 + 🏆	16th Prize	₹ 1100
2nd Prize	₹ 4000 + 🏆	17th Prize	₹ 1100
3rd Prize	₹ 3500 + 🏆	18th Prize	₹ 1100
4th Prize	₹ 3300	19th Prize	₹ 1100
5th Prize	₹ 3100	20th Prize	₹ 1100
6th Prize	₹ 2500	21st Prize	₹ 1000
7th Prize	₹ 2000	22nd Prize	₹ 1000
8th Prize	₹ 1900	23rd Prize	₹ 1000
9th Prize	₹ 1700	24th Prize	₹ 1000
10th Prize	₹ 1500	25th Prize	₹ 1000
11th Prize	₹ 1200	<b>BEST PLAYER IN VETERAN CATEGORY</b>	
12th Prize	₹ 1200	1st Prize	₹ 1500
13th Prize	₹ 1200	2nd Prize	₹ 1000
14th Prize	₹ 1200	<b>BEST PLAYER IN WOMEN CATEGORY</b>	
15th Prize	₹ 1200	1st Prize	₹ 1500

2nd Prize	₹ 1000
-----------	--------



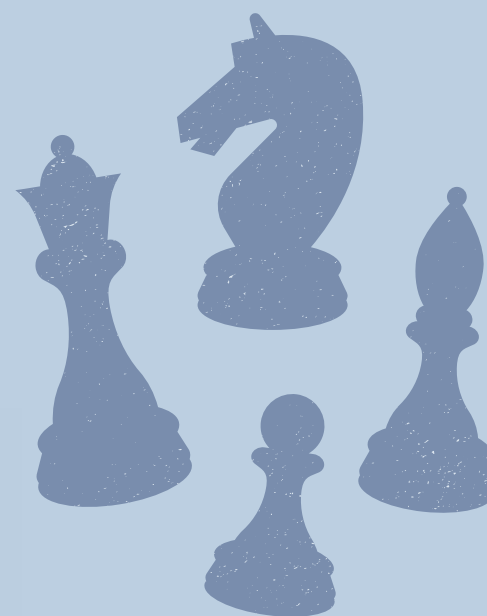
# RULE & REGULATIONS

- KSCA Registration is mandatory for Karnataka Players
- Time Control: 15min + 5sec
- E - Certificates will be awarded to all participants
- Entry fees are Non-Refundable and not transferable
- Prize Money will be transferred through Online to Winner's Bank Account (winners have to send their details to 7022785192)
- Decisions made by the Organizer & Chief Arbiter will be final & binding
- Participants must be present in Player's Meeting & Prize Function
- In the Event if a participant qualifies for multiple trophies, only the highest-ranking trophy will be awarded

**CONTACT US**



- 9403891882 (Only Call)
- 7022785192
- 8088694604
- 8431266812



## **Location: Inventure academy yashwanthpur**

Prestige Jindal City, Tumkur Rd, Anchepalya, Bengaluru-560073

## **Reaching the Venue**

The venue is just 500 meters from Chikkabidarakallu Metro Station. The best way to reach is via Namma Metro—a hassle-free, quick, and eco-friendly travel option.

## **INVENTURE ACADEMY**

Inventure Academy is a School with a Heart, where children are nurtured with joy, curiosity, and confidence. The school blends academic excellence with creative exploration - from dynamic classrooms and a maker space to strong sports programs and the arts. Rooted in individuality, empathy, and holistic growth, Inventure Academy shapes students into positive change makers and responsible global citizens, ready to thrive anywhere in the world.



[WWW.CHESENSEI.COM](http://WWW.CHESENSEI.COM)